



# Client Software QuickStart Guide 2019



## Contents

Welcome.....	3
Requirements/ Restrictions.....	3
Anti-Virus Exclusions .....	3
Routing/Port Requirements .....	4
Install Client Software and Setup .....	5
Setup and Installation.....	5
User Interface .....	6
Cameras .....	8
View Camera/s .....	8
Uninstall.....	10
Conclusion .....	10



## Welcome

This short guide provides basic instructions, and information, on how to setup **CathexisVision Client Software**.<sup>1</sup> The objective of this document is to get the user up and running as quickly as possible. For more detailed information, or server software guidance, consult the relevant manual (Setup manual, QuickStart guide etc) or contact support at [support@cat.co.za](mailto:support@cat.co.za).

**Please note:** in order to use this document and software, the assumption is that the user has a basic understanding of the operating system they are using, and is able to do simple administrative tasks (for example, adding disks, adding printers, or setting IP addresses).

## Requirements/ Restrictions

**CathexisVision Software** must be installed to continue with this document, and note that there is a **minimum requirement of 4 Gigabytes of RAM** to run this software.

## Anti-Virus Exclusions

If an anti-virus with active or real-time protection scanning enabled is being run, certain CathexisVision folders need to be excluded from anti-virus scanning.

The folders which need to be excluded are:

- CathexisVision **Client** installation folder.
- Any folders, drivers, and volumes where **database/s** reside.

**Note:** All folders and paths referred to below are default installation folders – if the default folder option was not selected during installation, then locate and exclude the installation folder/s from anti-virus scanning.

The sections below indicate the default installation folders and paths, which need to be excluded from scanning.

### ***Folders to Exclude in CathexisVision 2018 and Later***

For sites running CathexisVision 2016 and/or 2017, please exclude the following from anti-virus scanning:

	Folders to Exclude	
<b>CathexisVision Server</b>	32-bit	c:\program files (x86)\CathexisVision Server
	64-bit	c:\program files\CathexisVision Server
<b>CathexisVision Client</b>	32-bit	c:\program files\CathexisVision Client
<b>Database folders/drives/volumes</b>	Please locate and exclude.	

<sup>1</sup> While Cathexis has made every effort to ensure the accuracy of this document, there is no guarantee of accuracy, neither explicit, nor implied. Specifications are subject to change without notice.

## Complete List of Folders to Exclude

If the system uses a **global anti-virus** (meaning anti-virus protection is applied globally and not to individual units) and the different units in the site may have different installation folders, or if the **installation is prior to CathexisVision 2015**, then simply exclude **all** the default installation folders to avoid hassle.

**Note:** All folders and paths referred to below are default installation folders – if the default folder option was not selected during installation, then locate and exclude the installation folder/s from anti-virus scanning.

	Folders to Exclude
<b>CathexisVision Server</b>	c:\program files\Cathexis CathexisVision Suite NVR
	c:\program files (x86)\Cathexis CathexisVision Suite NVR
	c:\program files\CathexisVision Server
	c:\program files (x86)\CathexisVision Server
<b>CathexisVision Client</b>	c:\dvs
	c:\program files\Cathexis CathexisVision Suite WRV
	c:\program files (x86)\Cathexis CathexisVision Suite WRV
	c:\program files\CathexisVision Client
	c:\program files (x86)\CathexisVision Client
<b>Database folders/drives/volumes</b>	Please locate and exclude.

## Third-Party Anti-Virus Real Time Scanning on CathexisVision Clients

On a CathexisVision Client unit, the CathexisVision Server folder needs to be manually excluded from scanning by Windows Defender or other third-party anti-virus real time scanning components.

## **Routing/Port Requirements**

The following information regards the router ports that need to be opened on the network firewall/router/anti-virus. These ports are important in allowing several **Cathexis** services to run correctly. Please ensure that these ports are also opened on the anti-virus (if running one).

### Ports to Open

**Note:** These ports must also be opened on the antivirus (if running one).

Operational Ports	Protocol	Application	Description
<b>30010-30100</b>	TCP	CathexisVision Software	Required ports for access to the CathexisVision software and associated configuration, live and recorded view, etc.
* For full list of API ports, please consult API help guide or contact <a href="mailto:support@cat.co.za">support@cat.co.za</a>			

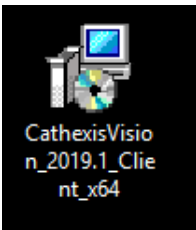
## Remote Support

Please download and install one of the following programs relevant to the operating system to ensure remote support is available if required.

**Windows:** Teamviewer, or Remote Desktop.

## Install Client Software and Setup

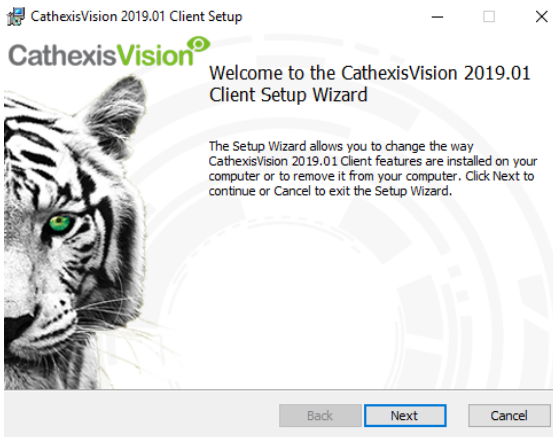
Double-click the installer file to open the Client Software:



## Setup and Installation

Follow the prompts below to complete installation.

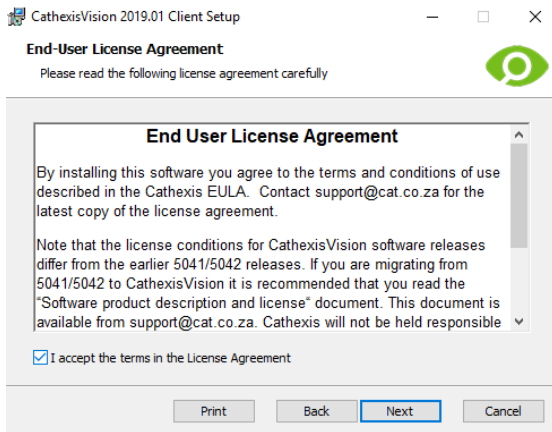
1.



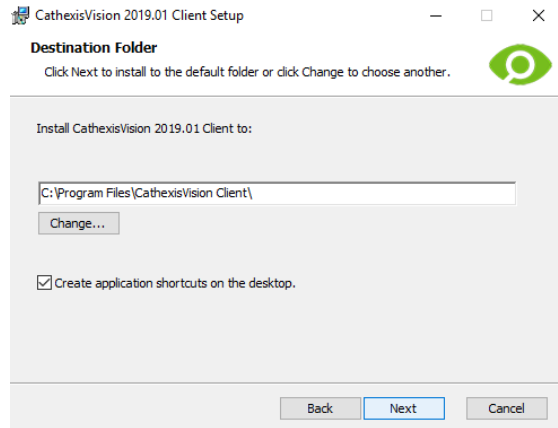
2.



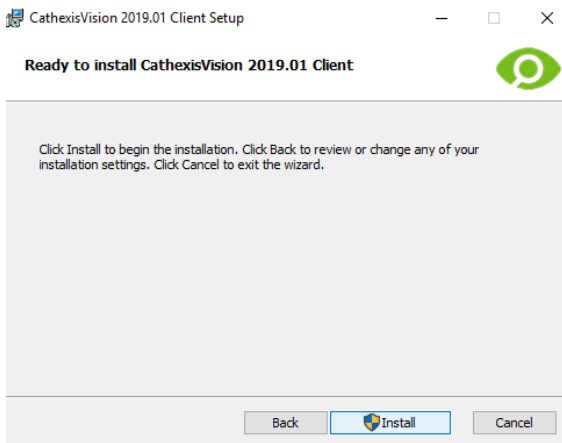
3.



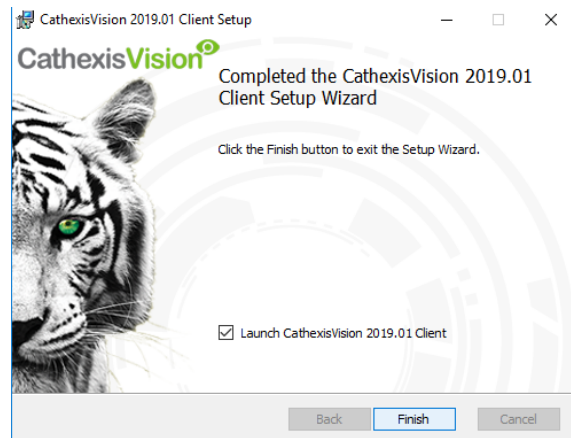
4.



5.



6.



Client Software will now be installed.

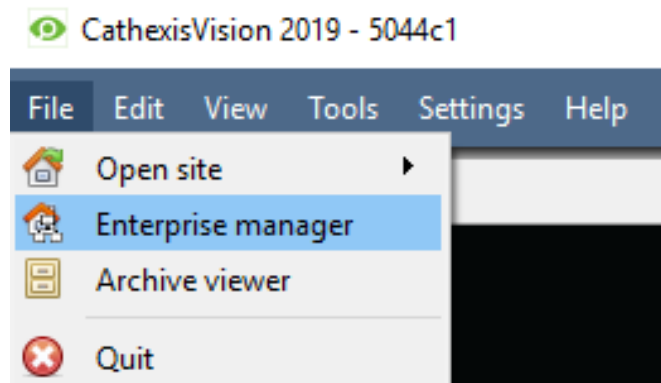
## User Interface

Next, the following interface will appear:

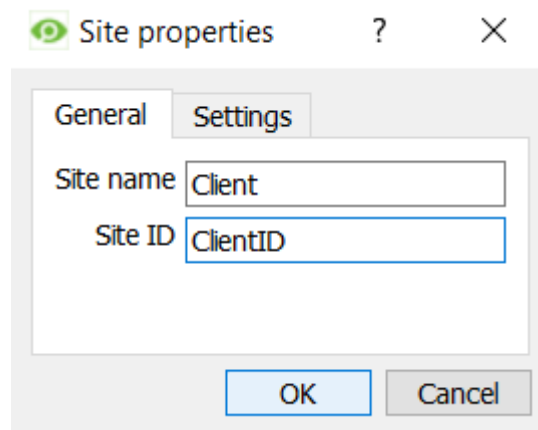
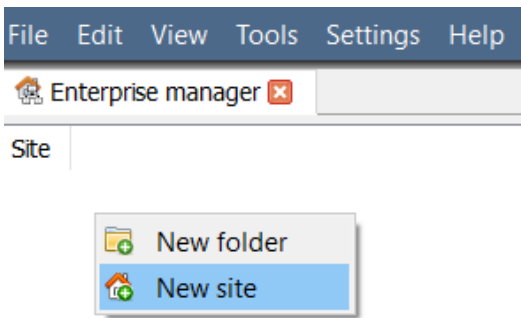
1.



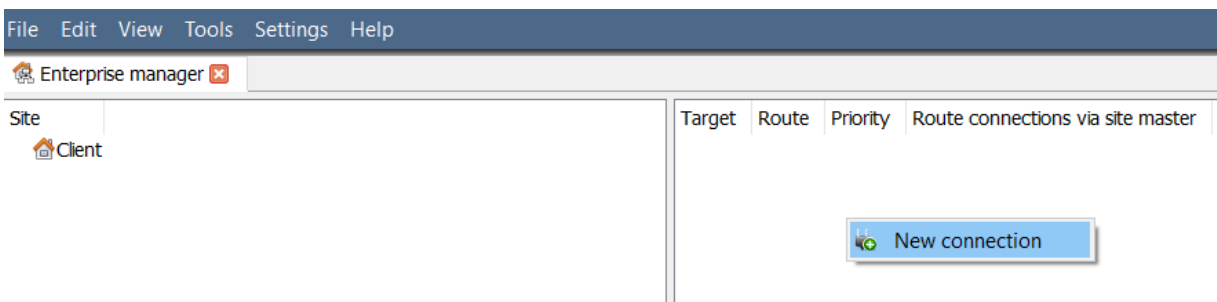
2. Open the Enterprise manager to set up sites



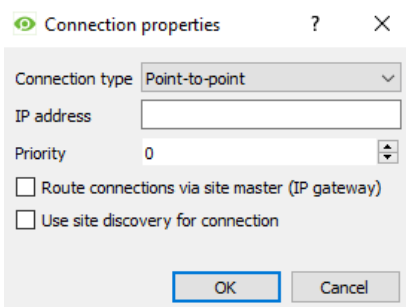
3. Right-Click in the Enterprise Manager to setup sites. 4. Give the Site a Name



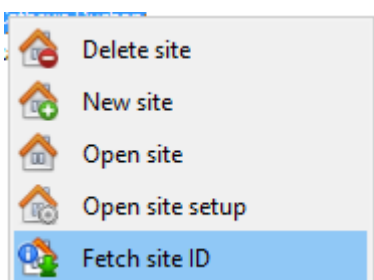
5. Right-Click on the top right of the screen to make a new connection



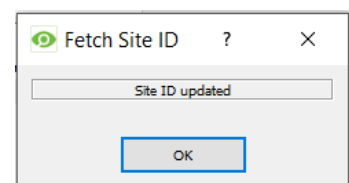
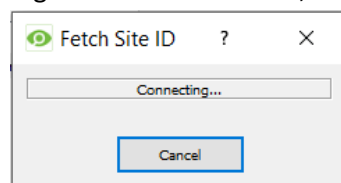
6. Connect to a relevant IP address



7. Fetch Site ID

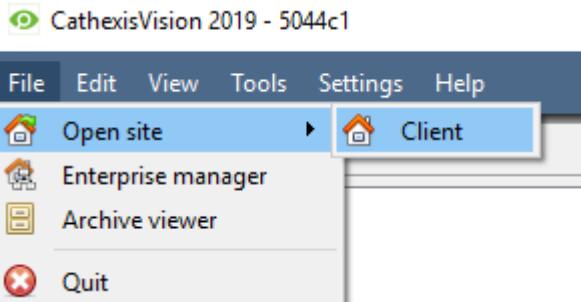


Right-click on Site Name, and click Fetch Site ID:



This tests the connection and retrieves important information about the site from the master unit of that site. Once this is done, connect to the site via **File → Site → Your\_Site\_Name**. Each site should have a unique site ID. The site ID is generated automatically when loading the NVR software.

8. The Site Can be Opened by returning to File:

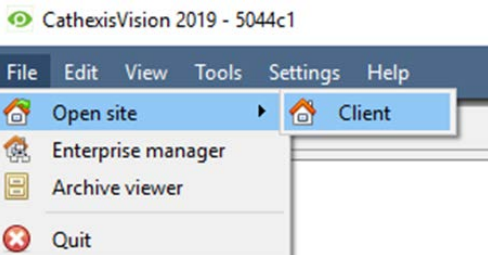


## Cameras

This section of the manual will detail methods for viewing cameras.

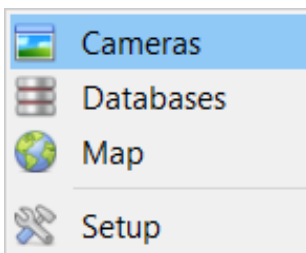
### View Camera/s

#### Open Site



**File → Open Site → Your\_Sites\_Name.**

*Open the Cameras Tab*



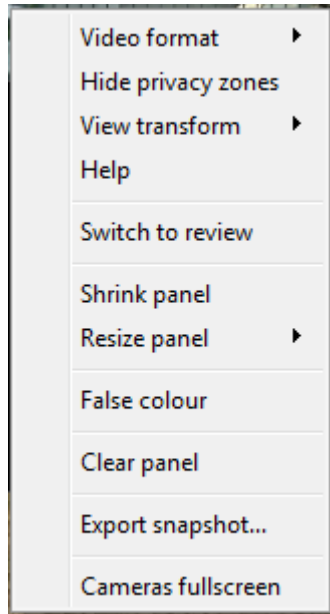
**File → Your\_Sites\_Name → Open Tab → Cameras.**

Double click on a camera in the **Resources** panel, to start viewing it.

#### Middle Click on a Live Camera

To change aspects of how the camera appears in a panel.





**Video format:** Allows the user to select which of the camera's video streams (which format/resolution) they wish to view.

**Hide/show privacy zones:** Will hide/show privacy zones on a camera image depending on access rights.

**View transform:** Allows transforming images for cameras with special lenses. (E.g. 360-degree cameras.)

**Overlays:** Allows viewing the different analytics algorithms that have been applied to this camera's feed, live in the Cameras Tab.

**Help:** Pops-up a help window on Digital Zoom, and PTZ Control within this panel.

**Switch to review:** Allows switching back and forth between live and review footage.

**Shrink panel:** Reduces the size of the camera panel.

**Resize panel:** Gives more resizing options.

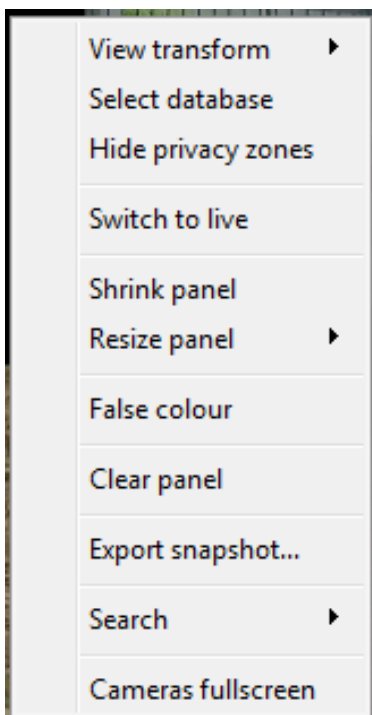
**False colour:** Changes the colour of the image to false colour.

**Clear panel:** Removes the camera/s from the currently selected panel/s.

**Export Snapshot...:** Opens a window, which allows one to print a snapshot, save to folder, copy to system clipboard, or copy to CathexisVision clipboard. Also choose to include the camera name and time of snapshot in the overlays.

**Cameras fullscreen:** Fills the entire screen with the Cameras Panel; creating a Video Wall. The same procedure will exit fullscreen mode.

### **Middle-Click on a Camera in Review**



**View transform:** Allows transforming images for cameras with special lenses. (E.g. 360-degree cameras.)

**Select database:** If multiple databases are set up, set a camera to record to a certain database using this option.

**Hide/show privacy zones:** Will hide/show privacy zones on a camera image depending on access rights.

**Switch to review/live:** Allows switching back and forth between live and review footage.

**Shrink panel:** Reduces the size of the camera panel.

**Resize panel:** Gives more resizing options.

**False colour:** Changes the colour of the image to false colour.

**Clear panel:** Removes the camera/s from the currently selected panel/s.

**Export snapshot...:** Opens a window, which allows the user to print snapshot, save to folder, copy to system clipboard, or copy to CathexisVision clipboard. Choose to include the camera name and time of snapshot in the overlays.

**Search:** Use snap-search feature to search the database for snapshots similar to the current image.

**Cameras fullscreen:** Fills the entire screen with the Cameras Panel; creating a Video Wall. The same procedure will exit fullscreen mode.

## Uninstall

To uninstall, simply follow the uninstallation process of the operating system on which **CathexisVision** is installed.

## Conclusion

Please remember that this is a brief guide to client software. For further information on the CathexisVision software, consult the main manual (<http://cathexisvideo.com/>). For support, contact [support@cat.co.za](mailto:support@cat.co.za)